

PIN 8110.13

CONSTRUCTION CONTRACT NO. 06-552

**CONSTRUCTION MANAGEMENT PLAN
FOR THE**

**REPLACEMENT OF BRONX RIVER PARKWAY BRIDGES
(AT CRANE ROAD)
OVER THE BRONX RIVER (BIN 3348779) AND
METRO-NORTH RAILROAD (BIN 3348789)**

**WESTCHESTER COUNTY
TOWN OF GREENBURGH & VILLAGE OF SCARSDALE, NEW YORK**

May 20, 2011

Westchester County Department of Public Works and Transportation

TABLE OF CONTENTS

INTRODUCTION.....3

I. SUPERVISION OF PROJECT3

 A. Agencies - Roles and Responsibilities3

 B. Consultant and Funding5

 C. Staff.....6

 D. Project Organization Chart7

II. CONTRACT AND PROJECT REQUIREMENTS.....8

 A. Disadvantaged Business Enterprise Goal (DBE).....8

 B. Equal Employment Opportunity Goals (EEO)8

 C. Permits8

 D. Requirements of Railroad and Utility Companies8

 E. Commitments Made to Other Municipalities, Emergency Service Providers, Schools, Etc.9

 F. Commitments Contained in Design Approval Document that are to be Fulfilled During Construction.....9

 G. Special Requirements.....9

 H. As-Built Preparation.....9

III. CONTRACT ADMINISTRATION9

 A. Subcontractor Approval Process.....9

 B. Change Order Approval Process.....9

 C. Procedures to Ensure Disadvantage Business Enterprise Compliance.....10

 D. Procedures to Ensure Equal Employment Opportunity.....10

 E. Wage Rate Compliance Procedures.....11

 F. Procedure to Ensure Worker Safety.....11

 G. Claim and Dispute Resolution Procedures12

 H. Scheduling and Time Extensions.....12

 I. Record Keeping and Record Retention Procedures.....12

IV. CONSTRUCTION INSPECTION14

 A. Inspection Plan.....14

 B. Quality Assurance/Quality Control Plan14

 C. Material Testing Procedures15

 D. Shop Drawings Approval Process15

V. COORDINATION WITH OTHERS16

 A. Permit Compliance.....16

 B. Utility Company and Railroad Coordination.....16

 C. Coordination with Affected Municipalities and Municipal Agencies16

 D. Anticipated Efforts to Ensure Satisfaction of Unfulfilled Commitments Made in Design Approval (Identified in II.F., above).....16

 E. Anticipated Efforts to Address all Special Requirements Identified in II.G. Above.....16

VI. CLOSE-OUT17

 A. Contract Acceptance and Close-out Procedures17

VII. MATERIAL TESTING PROCEDURE MATRIX.....APPENDIX A

INTRODUCTION

Westchester County Department of Public Works and Transportation (DPWT) will enter into an agreement with an engineering firm for construction inspection services.

Westchester County DPWT is the Sponsor, for the Replacement of the Bronx River Parkway Bridges (at Crane Road) over the Bronx River (BIN 3348779) and Metro-North Railroad (BIN 3348789) Project. The project limits extend from Ardsley Road in the south to the southbound Crane Road exit from the Bronx River Parkway to the north. In addition to the bridge replacements, the project also involves reconstruction of the approach roadways (including drainage and lighting, signing and striping); demolition of the existing MNR and Mushroom Bridges; restoration/stabilization of the Bronx River Shoreline; and landscape within the Bronx River Reservation. Two utilities, an existing 48" water main and a 54" sanitary sewer, that exist within the project limits, will be maintained and protected during construction.

I. SUPERVISION OF PROJECT

A. Roles and Responsibilities

John J. Hsu, P.E. Commissioner, Westchester County Department of Public Works and Transportation (WCDPWT) will be the Responsible Local Official (RLO).

1. Westchester County DPWT – (Sponsor) Responsibilities

- Provide funding agreements with New York State Department of Transportation,
- Provide Consulting Engineer contracts for design and management.
- Disperse funds to Contractor and Engineer.
- Review change order recommendations.
- Coordinate any public communications.
- Review progress of project and any outstanding issues with Engineer.
- Review and approve proposed sub contractors.
- Review wage rate and EEO compliance.

2. Construction Inspection Consultant Responsibilities

- Coordinate and preside at pre-construction meeting
- Prepare a comprehensive construction schedule, which will be monitored on a bi-weekly basis. This schedule will include the following main elements: Westchester County DPWT agreed start and completion date; % complete tracking, long lead items, key delivery dates; special Westchester County DPWT requirements; and a close out and punch list period.
- Review the Contractor's commencement and completion schedules referencing the overall Project Schedule and comment accordingly.
- Advise on constructability issues and concerns, selection of materials, building methods and installations, life cycle costs analysis, procurement, and lead times as well as establishing early procurement procedures.

- Create a preliminary procurement listing of all long lead items.
- Manage the services of necessary specialized Testing and Inspection agencies, and monitor and log results of project testing requirements.
- Coordinate and chair bi-weekly progress meetings on-site with Contractor, Designer and Westchester County DPWT to review progress of construction work and ensure adherence to project schedule. All meetings will follow same format and minutes will be prepared and issued documenting agreed upon action items.
- Monitor the quality of work and materials furnished to ensure compliance with the contract drawings and specifications. Provide interpretation of plans as required.
- Review and approve shop drawings submitted by the Contractor.
- Review and recommend on all scope of work changes, in particular with regards to cost and time effects, and recommend possible alternatives if available.
- Review, negotiate and prepare all change order requests and recommend course of action to WCDPWT.
- Prepare and Maintain Daily Engineer's Diary in accordance with the NYSDOT Manual of Uniform Record Keeping.
- Prepare and Maintain Daily Engineer's and Inspector's Report in accordance with the NYSDOT Manual of Uniform Record Keeping.
- Provide control systems for project record keeping and financial execution of the construction work. Review the Contractor's requisitions and make the necessary adjustments and then compile into one Requisition to be presented on a monthly basis to Westchester County DPWT for payment. The paperwork will include but not be limited to Certified Payrolls, Change Orders, Lien Waivers, etc.
- Preparation of final As-Built drawings in conjunction with Designer.
- Jobsite document control to include but not be limited to the issuance of Bulletins and revised Construction Documents to the Contractor as well as maintaining and updating the Contract Document set on site, Field Directives as issued by Designer and Daily Field reports.
- Determine when the project is "Substantially Complete".
- Perform "Punch List" of all items required for final completion.
- Recommend final payment to Sponsor.

B. Consultant and Funding

- The Consultant and Inspection Staff shall be reimbursed in accordance with the Procedure for Locally Funded Federal Aid Projects.

C. Staff

1. Westchester County Department of Public Works and Transportation – Sponsor

- John J. Hsu, P.E., Commissioner, WCDPWT RLO (Sponsor) – Responsible for execution of all contracts, change orders and payments.
- Scott Donnelly, P.E., Project Director, WCDPWT (Sponsor) – Responsible for general oversight of structural aspects of the project and providing structural liaison between Designer, Inspector, Railroad Representatives and NYSDOT. Responsible for recommending all payments to consultants and contractors and reviewing all change orders. Reviews payment requests for MNR force account work.
- Kevin Roseman, Project Manager, WCDPWT (Sponsor) – Responsible for general oversight of all aspects of project functions. Responsible for all administrative items including reviewing all contracts and related documents, acting as direct liaison between WCDPWT and all consultants, contractors, railroad representatives, and NYSDOT LPU representatives. Responsible for reviewing and processing all payments to consultants and contractors.

2. Consulting/Design Engineer

- Engineering Supervisor/Project Engineer – Acts as overall engineering supervisor for the project.
- Civil / Structural Engineers & Landcape Architects
 - Review Shop Drawings
 - Make Revisions If Necessary
 - Review Field Change Requests

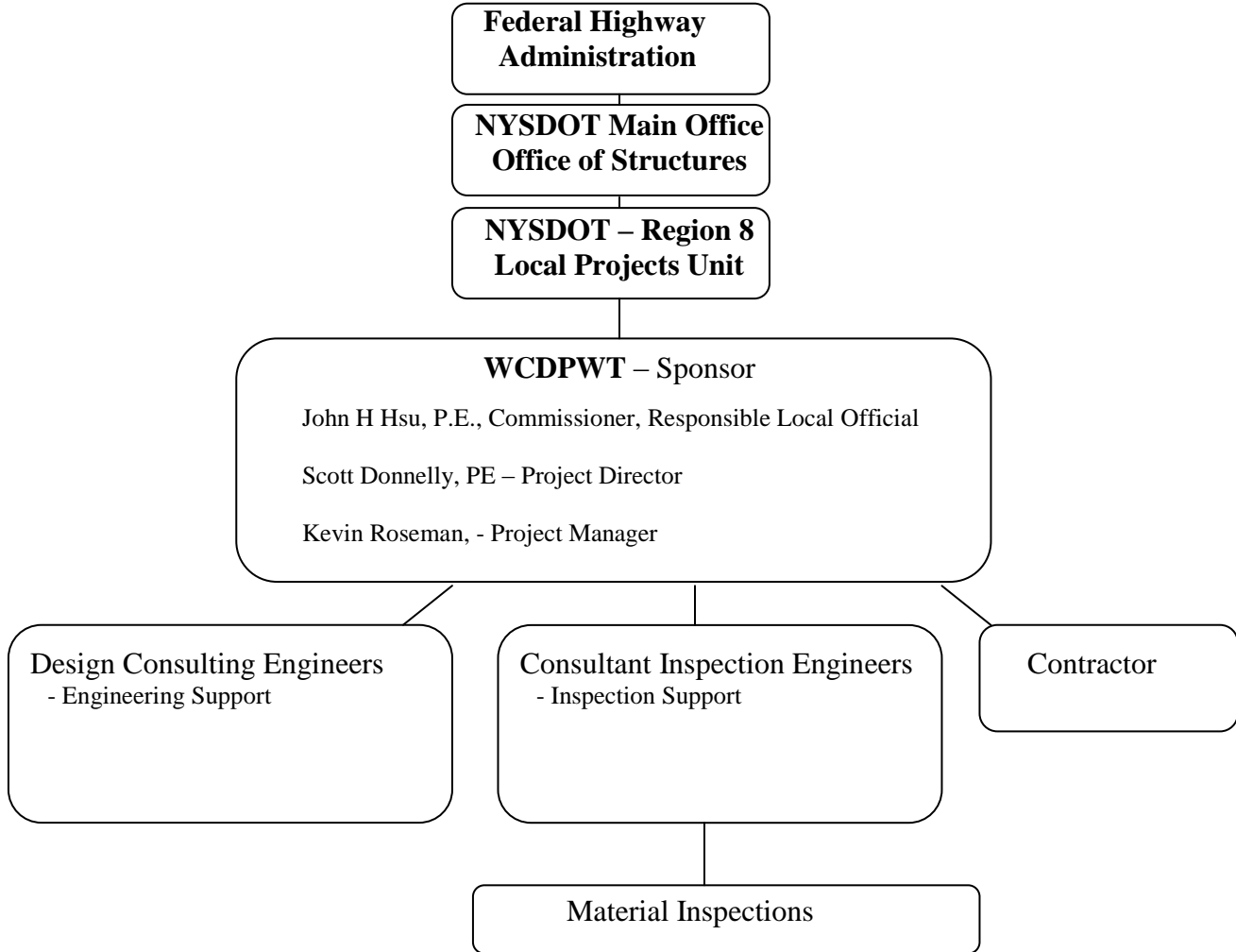
3. Construction Inspection Staff (Resident Engineer, Office Engineer, Inspectors)

- Resident Engineer (RE) shall be a licensed Professional Engineer in NY and be responsible for most items, identified in Section I.2 of this plan which includes:
 - Supervise Inspectors.
 - Conduct Construction Meetings.
 - On-Site Inspections when Contractor is performing work.
 - Respond to Contractors Questions.
 - Measure Pay Quantities.
 - Review & Recommend Monthly Payment Requests.

- Reviews MNR Force Account work.
- Maintain Daily Construction Reports/Engineer's Diary in accordance with NYSDOT Manual of Uniform Record Keeping.
- Monitor Material Testing.
- Review Maintenance and Protection of Traffic Daily.
- Preparation of final As-Built drawings.
- Perform Wage Rate Interviews
- Inspectors / Field Office Engineers
 - Perform on-site project inspections of construction work.
 - Monitor Daily Construction Activities
 - Track Measurements/Quantities of Completed Work
 - Monitor MPT Plans
 - Measure Pay Quantities.
 - Maintain Daily Construction Reports
 - Monitor Material Testing
 - Perform SWPPP Inspections and Maintain Logs

D. Project Organization Chart / Chain of Command

The Project staff hierarchy is illustrated in the organization chart below:
The final determination for dispute resolution will rest with FHWA / Responsible Local Office



II. CONTRACT AND PROJECT REQUIREMENTS

A. Disadvantaged Business Enterprise Goal (DBE)

The Disadvantaged Business Enterprise Goal for this project is 8%.

B. Equal Employment Opportunity Goals (EEO)

The minority workforce participation goal is 22.6% and the female workforce participation goal is 6.9%.

C. Permits

Permit / Approval Type	Permit Status	Date of Receipt	Date of Expiration
NYSDEC 401 Water Quality Certifications	Issued	01/20/2011	Exp. Date not stated on Permit
USACE – Nationwide General Permit 14	Issued	12/15/2010	Exp. Date not stated on Permit
NYSDEC SPEDES General Permit for Stormwater Discharges From Construction Activity (GP-0-10-001)	Issued	04/20/2011	1/28/2015
NYSDOT Highway Work Permit for Local Detour	Expected	June 2011	12/31/14

D. Requirements of Railroad and Utility Companies

The Metro North Railroad is located beneath the Crane Road Bridge. The Westchester County Department Public Works and Transportation and the Metro-North Railroad have entered into a Force Account agreement. WCDPWT will be required to provide the force account deposit and the insurance certificates required by the agreement in advance of the actual work. Resident Engineer/Contractor will be responsible for coordinating with Metro-North Railroad for all operations within Metro-North fouling limits. Construction activities requiring temporary track outages will be kept to a minimum. Resident Engineer/Contractor will be responsible for coordinating track outages with Metro-North.

The Contractor will also notify the “Call-Before-You-Dig” service, and the appropriate utility companies will provide representatives to come to the site and mark the location of the utilities in the vicinity of the work area. This is to ensure that the Contractor is not to rely on approximate utility locations shown on the plans, and to minimize the likelihood of damage to the underground utilities.

E. Commitments Made to Other Municipalities, Emergency Service Providers, Schools, Etc.

The Contractor is responsible for maintaining traffic on the Crane Road Bridges during all stages of construction in accordance with the Maintenance and Protection of Traffic Plans through utilization of qualified personnel working under his/her employ or through payment for Village of Scarsdale, Town of Eastchester and Westchester County Police Officers pursuant to the Construction Contract. The Contractor is also responsible for coordinating emergency vehicle access with local services departments (Police, Fire, Ambulance) as well as local school districts for school bus access and all public transit including but not limited to the Westchester County Bee Line bus service.

F. Commitments Contained in Design Approval Document that are to be Fulfilled During Construction.

All work will be performed in accordance with the May 1, 2008 NYSDOT Standard Specifications and Standard Sheets, as amended.

G. Special Requirements

N/A

H. As-Built Preparation

The Resident Engineer shall be responsible for preparing final As-Built Drawings based on Contract Survey. The Contractor shall provide as-built survey for use in preparing the As-Built Plans

III. CONTRACT ADMINISTRATION

A. Subcontractor Approval Process

A subcontractor must be approved by the Sponsor prior to start of any work. In verifying the eligibility of the subcontractor, the Sponsor will check the subcontractor's status for federal disbarment, NYS Department of Labor disbarment, and the eligibility of a firm to perform work in New York State with the NYS Department of State. This information will be researched on the Internet for all three respectively, at:

www.epls.arnet.gov/epl/owa/epl_login_form,

www.labor.state.ny.us/htm/prevwage/debarred.pdf,

www.wdb.dos.state.ny.us/corp_public/corp_wdb.corp_search_inputs.show.

The Sponsor will submit written verification to the NYSDOT of the subcontractor's eligibility.

B. Change Order Approval Process

A change order or Order-on-Contract will be prepared and processed when it is necessary to:

- Increase or decrease any of the contract pay items.

- Add new or modified pay items required to complete the work in accordance with the contract.
- Adjust payments due to contract provisions.

The Contractor will submit a change order request to the Resident Engineer for review. The change order must provide sufficient explanation documenting the necessity of the additional work and that it is consistent with the approved contract documents, and within the scope and intent of the agreement. Documentation and change order requirements will be in accordance with Section 104 of the May 1, 2008 NYSDOT Standard Specifications, as amended.

After the Resident Engineer has reviewed the change order documentation, discussed and negotiated with the contractor and provided his/her recommendation to the Sponsor, the Sponsor (Project Manager and/or Project Director) will then review the change order and recommendation. After Sponsor review, and before final approval, a copy of all Change Orders will be sent to the Regional Local Projects Liaison (RLPL). The RLPL's approval will be requested for any change order that:

- Adds significant new items
- Changes the character of the work materially, in kind or nature from that included in the original proposed construction contract.
- Changes the quantity of any major item of work, fixed quantity item, or composite item (as defined in the contract) above 125% or below 75% of the original contract quantity.
- Proposes changes outside the contract limits
- Proposes changes outside the contract scope
- If the total net value of all changed work exceeds the contingent amount established for the project in the State/Local agreement. This may require processing a Supplemental Agreement to the State/Local Agreement.

When the Sponsor or NYSDOT/FHWA, as defined above, has approved the change order, the Resident Engineer will issue the change order using the current NYSDOT Order On Contract Forms. All change orders must be approved in writing prior to the start of the proposed work.

C. Procedures to Ensure Disadvantage Business Enterprise Compliance

In accordance with the DBE section of Appendices 12, of the Procedures for Locally Administered Federal Aid Projects (PLAFAP) the Contractor will make a good faith effort to utilize DBE's as his subcontractors. The Contractor will complete form AAP19c and AAP 20. The Sponsor, Resident Engineer and the Contractor will collaborate on all DBE reporting requirements.

D. Procedures to Ensure Equal Employment Opportunity

The Resident Engineer will interview the Contractor's EEO officer to insure that the Contractor is fully familiar with the Code of Federal Regulations, Title 41, Chapter 60, 60-1.1, Equal Opportunity Clause and 60-4, Construction

Contractors, Affirmative Action Requirements; and Form FHWA 1273.III, Non-segregated Facilities; all of which are included in the Bid Proposal. The Office Engineer will monitor the Contractor's Compliance with these requirements. The Resident Engineer will insure that the following forms are completed:

Monthly: AAP-33LL, Monthly Employment Utilization Report

With each payment: AAP-21LL, Prime Contractor Report of Contractor Payments

E. Wage Rate Compliance Procedures

Sponsors must comply with the following:

- Collect and maintain all payroll records for 5 years after the completion of work.
- Designate, in writing the individual responsible for collecting payrolls from the Prime Contractor.
- The Sponsor's designated employee's name must be posted in a conspicuous location at the project

The Sponsor must make the Prime Contractor's filing of payrolls with the Sponsor a condition of payment. If the Prime Contractor fails to file payrolls or willfully underpays wages, the Contractor can face possible felony charges. The Resident Engineer will audit the Contractor's Certified Payroll reports on a weekly basis. The Inspector will also conduct wage rate interviews with at least one member of each trade and at least twenty percent of the Contractor's labor force by the end of the project. The statement of compliance as required by Form FHWA 1273.V.2, (See PLAFAP 1273 Requirements) Manual Statement and Payrolls – Payroll Records, will be strictly enforced.

The Office Engineer will compare the actual pay rates and supplemental benefits paid to the labor force with the State and Federal Wage rates published in the Bid Proposal. The contractor will be advised immediately in writing if there is a violation of this contract requirement, and will have one week to rectify the disparity.

F. Procedure to Ensure Worker Safety

The Contractor, Subcontractor and Engineer will follow the requirements of NYSDOT Murk Part 1C – Safety & Health Program Manual. Contractor is responsible for following all guidelines set forth by the Occupational Safety and Health Administration (OSHA), as well as other applicable federal, State, and local laws, rules and regulations. No Contractor or Subcontractor for any part of the contract work shall require any laborer or mechanic employed in the performance of the contract to work in surroundings or under working conditions, which are unsanitary, hazardous, or dangerous to his or her health or safety.

The Contractor and any Subcontractors will be required to submit a site-specific project safety and health plan, and are responsible for designating in writing to

Owner an experienced individual to enforce applicable safety regulations, and to prevent the occurrence of accidents. The Subcontractor can avoid submitting a plan if they are a signatory to the prime contractor's plan.

The Consultant is required to ensure that all inspection staff assigned to the Project are knowledgeable concerning the safety and health requirements of the Contract, all applicable NYSDOT and OSHA policies, procedures and specifications and that they enforce adherence to all such standards. Individual inspectors must be instructed relative to the safety concerns for construction operations they are assigned to inspect to protect their personal safety and to ensure they are prepared to recognize and address any Contractor oversight or disregard of project safety requirements.

The Consultant will also be responsible for monitoring the Contractor's and Subcontractor's efforts to maintain traffic and protect the public from damage to person and property within the limits of, and for the duration of, the Contract.

G. Claim and Dispute Resolution Procedures

Claim and Dispute Resolution Procedures will follow those specified under NYSDOT Section 105-14, Dispute Resolution and Disputed Work Provisions to settle claims and disputes. The Resident Engineer will organize and coordinate the dispute resolution process and the RLO, John, J. Hsu, PE, Commissioner of Public Works and Transportation, will make the final finding upon the recommendation of the Project Director.

H. Scheduling and Time Extensions

As required under Section 108-01, start and progress of work, the Contractor shall submit to Sponsor a detailed project schedule describing and outlining each activity on the critical path, including the commencement and completion dates. The Contractor is required to submit this project schedule within five days after commencement of work. If the schedule is found to be unacceptable by the Sponsor, the Contractor must revise and submit a new schedule within seven (7) days of the rejection notice date. The Resident Engineer and the Project Manager will review this schedule and monitor the Contractor's compliance with this schedule. If the Contractor does not progress the work at the rate proposed, he will be advised in writing of failure to comply with his schedule and he will be ordered to provide an updated schedule indicating the means that he will use to guarantee the completion of the project on time. No extensions of time will be allowed unless specifically negotiated under Section 105-14, Dispute Resolution and Disputed Work Provisions.

I. Record Keeping and Record Retention Procedures

The Resident Engineer will maintain project records in accordance with the NYSDOT Manual for Uniform Record Keeping (MURK), including but not limited to the documentation list identified as follows:

1. Project Diary – MURK 2.
2. Daily Work Report – These forms may be downloaded at www.nysdot.gov > Divisions > Office of Construction > Forms > Inspection Reports
3. Field Books/Computation Books.
4. Materials Acceptance Record – MURK 14.
5. Material Acceptance.
6. Correspondence.
7. Cross Sections.
8. Photographs/Videotape.
9. Record Plans.
10. Preconstruction Meeting Minutes.
11. Utility Relocation Documentation.
12. Wage Rate Schedules.
13. Wage Rate Interviews
14. Certified Payrolls.
15. Overtime Dispensations.
16. EEO Documentation.
17. Disputed Work Records.
18. Shop Drawings.
19. List of Material Sources (Suppliers)
20. Material Safety Data Sheets (MSDS).
21. Safety and Health Requirements
22. Insurance Certificates.
23. Borrow/Waste Area Approvals, Mining Permit.
24. Right-of-Way Maps.
25. Releases.
26. ROW Initial Entry Notices.
27. Project Schedules.
28. Subcontractor Approvals.
29. Requisition Requests and Payments on Contract.
30. Change Order Requests and Approvals.
31. Project Schedule.
32. Project Schedule Extension Claims.
33. Partial Payment Documentation.
34. Order-on-Contract.
35. Metro North Force Account Records.
36. Final Acceptance Documentation.
37. Uncompleted Work Agreements.
38. Final Agreement.

The project will use **APPIA Construction Management Software** to manage daily reports, quantities, change orders, construction payment schedules, etc.

All project records will be available for inspection by the Sponsor and NYSDOT at the Resident Engineer's field office at all times.

The daily inspector's reports will include payment item quantities in English measurement.

Contractor shall maintain documents in the Contractor's field office in clean, dry, legible condition. Files and racks should be provided for proper storage and easy access. All documents shall be labeled "PROJECT RECORD" in two-inch high printed letters. Progress as-built shall accompany each progress payment request. Upon completion of the work, record documents to be delivered to the Engineer.

The Sponsor will maintain all project records for at least ten years, in a fire proof safe.

IV. CONSTRUCTION INSPECTION

A. Inspection Plan

The Sponsor is responsible for general oversight and administration of the project. The Resident Engineer (RE) is responsible for managing and coordinating the construction activity including all technical aspects of the project. The RE will also be responsible for oversight of additional inspectors when required, and the independent material testing companies. The RE and inspectors shall be familiar with the NYSDOT MURK Manual's Parts 1A, 1B, 1C and 2A. The RE will be on site whenever the Contractor is performing work, which involves quality control and/or measurement of quantities. RE will not be required to be on site when Contractor is performing non-critical work. It is anticipated that the RE will be on site for ~95% of the contract period. Additional inspectors will be present when the Contractor will be working on the bridge and on the approaches, or as deemed necessary. Inspectors will be responsible for measuring pay quantity, maintaining daily construction reports, monitoring material testing, etc.

Additionally, the RE is to observe construction by regular and constant attendance to confirm that the material supplied and work completed complies with the contract documents. The RE should be familiar with the plans and specifications and report any apparent deficiencies in work to the Designer's Project Engineer and the Sponsor. The RE shall inform Contractor of required tests, submittals, and other responsibilities. The RE will also be required to prepare daily field and quantity reports, and advise the Sponsor's Project Manager of any anticipated increases in quantities beyond those estimated in the contract documents. The RE shall be cognizant of the critical path construction schedule and provide advanced planning to timely resolve any construction questions and issues so as not to unnecessarily delay the project.

B. Quality Assurance/Quality Control Plan

The Contractor and its suppliers will be responsible for Quality Control of all aspects of Supplies, Materials and Construction Procedures. Quality assurance will be the responsibility of the RE. All work will be performed in accordance with the NYSDOT standard specifications and standard sheets. All Contractors, Subcontractors and Suppliers must be approved in accordance with the requirements of Section III.A. All manufacturers and suppliers must be on the State approved list, and all materials must be certified to meet NYSDOT specifications. The RE will be responsible for the following:

- Comprehensive knowledge of all plans and specifications, including any changes or modifications.
- Compare shop drawings with the actual work performed and equipment being installed on a regular basis to ensure Contractor is completing the work in conformance with the contract documents. If deficiencies exist, he will inform the Contractor of the errors and oversee all required corrective work.
- Provide a detailed daily construction report for each contractor, including personnel, hours worked, construction equipment, work performed, tests conducted, deliveries, weather, and any comments relative to the daily work activities.
- Take daily measurements and determine quantities for unit price payment.
- Perform surveys and take measurements to verify Contractor's elevations and dimensions.

C. Material Testing Procedures

The Consultant Inspection Engineering Firm is to employ and pay for an independent testing laboratory to perform specified services on-site. Testing methods shall meet all ASTM requirements. These tests include, but are not limited to those identified in the attached Table prepared for the project and included in Appendix A. In addition, all materials must be furnished from NYSDOT approved sources and must be certified to meet NYSDOT standards.

This structure contains members that must be fabricated in accordance with the requirements of fracture-critical members. All Members paid under Item 564.0501, [Structural Steel (Type 1) Octagonal Column Inserts] and Item 564.0502 [Structural Steel (Type 2) Brackets] shall be considered to be Fracture-Critical in accordance with the applicable provisions of *Section 9* of the **New York State Steel Construction Manual (SCM)**. The steel brackets and steel core of the structure require a "Special Complete Structure Assembly". Inspections and assembly shall comply with the applicable provisions of Section 9 and Section 11 of the New York State Steel Construction Manual (SCM).

Since this project is on the National Highway System (NHS), in accordance with Chapter 9 of the PLAFAP, the New York State Department of Transportation will conduct all off-site QA inspections for the project as shown in the Table included in Appendix A.

D. Shop Drawings Approval Process

Within twenty (20) days of the effective date of the Contract, a pre-construction meeting shall be held for review and acceptance of all schedules, to establish procedures for submitting shop drawings and other submittals, for processing applications for payment, to review contract submission of the project schedule, and to establish a working understanding among the parties as to the progression of the work.

Shop Drawing review will be the responsibility of the Designer. As appropriate, after Designer approval, shop drawings will be forwarded to FHWA / NYSDOT Main Office for their review/approval.

V. COORDINATION WITH OTHERS

A. Permit Compliance

The Sponsor, through the Resident Engineer, will ensure that all permit requirements are met. Copies of all permits will be maintained at the project site and distributed to the Contractor and Resident Engineer.

B. Utility Company and Railroad Coordination

The Resident Engineer shall coordinate a meeting between all affected utility owners, Contractor, and Project Manager, prior to start of construction work to coordinate all work, affecting utilities. The Contractor will also be required to notify all utility companies at least three days in advance, in writing prior to undertaking excavation in a particular area or road. The Contractor is also required to arrange to have a utility company representative present to jointly examine all street markings placed by the utility company as designating the locations of underground facilities.

C. Coordination with Affected Municipalities and Municipal Agencies

The Contractor shall inform all affected municipalities and municipal agencies, including but not limited to area schools, emergency ambulance, Fire and Police services/departments in writing at least 48 hours in advance, of all construction activity resulting in traffic detours and other work requiring these agencies to modify their normal operating procedures in the dispense of their governmental service. In addition, signs will be installed prior to establishing any traffic detours, to provide advanced warning to the general public.

The Resident Engineer and the Contractor will coordinate closures and inform the Project Manager at least 1 week prior to closures or staging changes. The Project Manager will issue Traffic Advisories to the affected municipalities and the Hudson Valley Transportation Management Center for any roadway closures, lane reductions, ramp closures or detours. For major changes, motorists will be informed though the use of Variable Message Signs, including those provided as art of this project and others deployed by the sponsor.

D. Anticipated Efforts to Ensure Satisfaction of Unfulfilled Commitments Made in Design Approval (Identified in II.F., above)

All work will be performed in accordance with the May 1, 2008 NYSDOT Standard Specifications and Standard Sheets.

E. Anticipated Efforts to Address all Special Requirements Identified in II.G. Above N/A

VI. CLOSE-OUT

A. Contract Acceptance and Close-out Procedures

The Sponsor is responsible for the closeout of the contract between the Sponsor and the Contractor. The closeout procedures described in Chapter 17 of the PLAFAP manual will be followed. The RLPL will be notified upon project completion for final inspection. The final inspection with the Sponsor, Resident Engineer, Contractor, NYSDOT and FHWA will involve verifying that the work completed is in compliance with the contract documents, identifying any deficiencies that need to be corrected. Resident Engineer will notify Contractor in writing of all non-compliant defective work requiring modification. Contractor shall immediately take such measures as are necessary to remedy such deficiencies.

After Contractor has completed all such corrective work to the satisfaction of the Resident Engineer and delivered all maintenance and operating instructions, schedules, guarantees, bonds, certificates of inspection, marked up record documents, and other documents, as required by the contract documents, and after the Resident Engineer has indicated that the work is acceptable, Contractor may make application for final payment. All prior progress payments shall be subject for review and correction by the Resident Engineer and appropriate adjustments made as part of the final application procedure. The final application for payment shall be accompanied by all documentation required in the contract documents and such other data and schedules as the Resident Engineer may reasonably require, together with complete and releases or waivers (satisfactory to Sponsor and NYSDOT) of all liners arising out or filed in connection with the work.

Because this project involves a NYSDOT Highway Work Permit, the NYSDOT Permit Engineer will also be notified to perform a final inspection of the work on the NYSDOT ROW. The project will not be deemed complete until the HWP work has been accepted and the HWP closed out.

The Sponsor will collect the following final forms:

- Final AAP 33d-EEO Report for all prime and subcontractors.
- Final Disadvantaged Business Enterprise (DBE) Utilization Report (Form AAP-19).
- Final AAP21 LL– Prime Contractor Payment Report.
- Certification for Construction Acceptance
- Certification for Construction Inspection
- As-Built plans and a load rating report, as well as a copy of the formal request for a bridge inspection. This inspection by the Region 8 Structures Unit is required within 60 days after the bridge is open to traffic.

During the project close out process the Sponsor will submit to NYSDOT the above referenced forms along with a final agreement identifying final quantities and cost of all contract items.

After all required close-out documentation has been provided, and final payment made to the Contractor, the County will close out the State/Local agreement.

APPENDIX A

Westchester County, New York Department of Public Works REPLACEMENT OF BRONX RIVER PARKWAY BRIDGES (AT CRANE ROAD) OVER BRONX RIVER AND METRO-NORTH RAILROAD Town of Greenburgh & Village of Scarsdale, New York				REQUIRED TESTS					REMARKS	
				PLANT/ STOCKPILE INSPECTION	RESPONSIBLE PARTY	FIELD TESTING/ INSPECTION	RESPONSIBLE PARTY	LABORATORY TESTING OF SAMPLES		RESPONSIBLE PARTY
LINE	REG	Item No.	Item Description							
49	15	604.510203	STORMWATER TREATMENT SYSTEM (SWTS) (MAXIMUM FLOW CAPACITY OF 33 GAL/SEC)	Precast Conc. Units Plant	NYSDOT	Field Testing per System Operation & Mtce Manual	REI		Sec 715-XX - Manhole Frames & Covers (Manuf. Cert, etc.)	
50	15	604.510204	STORMWATER TREATMENT SYSTEM (SWTS) (MAXIMUM FLOW CAPACITY OF 45 GAL/SEC)	Precast Conc. Units Plant	NYSDOT	Field Testing per System Operation & Mtce Manual	REI		Sec 715-XX - Manhole Frames & Covers (Manuf. Cert, etc.)	
51		605.0901	UNDERDRAIN FILTER TYPE 1	Stockpile	NYSDOT			Gradation & Soundness	DOT	
52		605.1701	OPTIONAL UNDERDRAIN PIPE, 4 INCH DIAMETER	N/A	N/A		N/A		N/A	DOT Approved List & Manuf Cert
53		655.0803	CAST FRAME F3, MOUNTABLE CURB BOX CM3 & PARALLEL BAR GRATE 8 PCB	N/A	N/A		N/A		N/A	Manufacturer's Certificate
54	10	655.080300	CAST FRAME F3, WITHOUT CURB BOX AND WITH PARALLEL BAR GRATE 8 PCB	N/A	N/A		N/A		N/A	Manufacturer's Certificate
55		655.0902	PARALLEL BAR FRAME 11 PCB & PARALLEL BAR GRATE 11 PCB	N/A	N/A		N/A		N/A	Manufacturer's Certificate
56		655.1202	MANHOLE FRAME AND COVER	N/A	N/A		N/A		N/A	Manufacturer's Certificate
57										
58			REHABILITATION OF 48" WATERMAIN AND 54" SANITARY SEWER							
59		604.070802	ALTERING DRAINAGE STRUCTURES, LEACHING BASINS AND MANHOLES	Brick Plant	NYSDOT	Brick Stockpile	REI	Compressive Strength & Absorption (Common /Concrete	DOT	Sec 704-01/02 -Common/Concrete Bricks (DOT Approved List)
60	08	602.9054XX	LINING EXIST. 54IN PIPE WITH REINF. FIBERGLASS POLYMER MORTAR PIPE FOR SLIPLINING	N/A	N/A	Hobus Pipe, Concrete and Grout	REI		N/A	Material Certificates
61	08	663.06XX00	FURNISH AND INSTALL RESTRAINED JOINTS ON AN EXISTING 48IN WATERMAIN	N/A	N/A		REI		N/A	Material Certificates
62										
63			SOIL EROSION / SEDIMENT CONTROL							
64		607.3003	OPTIONAL CHAIN-LINK FENCE, TYPE I, WITH TOP RAIL 2440MM HIGH	N/A	N/A		N/A		N/A	Material Cert (Fence Fabric, Post, Rail, etc.)
65		209.1701	DRAINAGE STRUCTURE INLET PROTECTION, SILT FENCE - TEMPORARY	N/A	N/A		N/A		N/A	DOT Approved List
66		209.1801	ROLLED EROSION CONTROL PRODUCT, CLASS I TYPE A, SHORT TERM	N/A	N/A		N/A		N/A	DOT Approved List & Manuf. Cert
67										
68			LIGHTING							
69		670.2002	GALVANIZED STEEL CONDUIT, 1"	N/A	N/A		N/A		N/A	Manufacturer Cert
70		670.2003	GALVANIZED STEEL CONDUIT, 2"	N/A	N/A		N/A		N/A	Manufacturer Cert
71		670.2004	GALVANIZED STEEL CONDUIT, 3"	N/A	N/A		N/A		N/A	Manufacturer Cert
72		670.2306	GALVANIZED STEEL PLASTIC COATED CONDUIT, 2"	N/A	N/A		N/A		N/A	Manufacturer Cert
73		670.3001	PULLBOXES LESS THAN 5 CUBIC FEET, INSIDE VOLUME (LIGHTING)	N/A	N/A		N/A		N/A	Manufacturer Cert
74		670.40	CAST IRON JUNCTION BOXES	N/A	N/A		N/A		N/A	Manufacturer Cert
75		670.501215	LUMINAIRE, HIGH PRESSURE SODIUM VAPOR, STANDARD MOUNT, MEDIUM, SEMI-CUTOFF, 1	N/A	N/A		N/A		N/A	Manufacturer Cert
76		670.60	PHOTOELECTRIC CONTROLS	N/A	N/A		N/A		N/A	Manufacturer Cert
77		670.7002	SINGLE CONDUCTOR CABLE, NUMBER 2 GAGE	N/A	N/A		N/A		N/A	Manufacturer Cert
78		670.7004	SINGLE CONDUCTOR CABLE, NUMBER 6 GAGE	N/A	N/A		N/A		N/A	Manufacturer Cert
79		670.7006	SINGLE CONDUCTOR CABLE, NUMBER 10 GAGE	N/A	N/A		N/A		N/A	Manufacturer Cert
80		680.510601	PULLBOX-OPTIONAL RECTANGULAR, 26 X 18 INCH OR CIRCULAR, 24 INCH DIAMETER, REINF	N/A	N/A		N/A		N/A	Manufacturer Cert
81		680.5120	CAST IRON JUNCTION BOX	N/A	N/A		N/A		N/A	Manufacturer Cert
82		680.72	INDUCTANCE LOOP WIRE	N/A	N/A		N/A		N/A	Manufacturer Cert
83		680.6814	TRAFFIC SIGNAL POLE-BRACKET MOUNT 14 FEET MOUNTING HEIGHT	N/A	N/A		N/A		N/A	DOT Approved List, Manuf. Cert, Mill Certs
84		680.5001	POLE EXCAVATION AND CONCRETE FOUNDATION	Concrete Plant (CIP)	NYSDOT	Air & Slump	REI	Concrete Cylinders	REI	1. Delivery & Pick-up of cylinders req'd. 2. Precast: Approved List & Manuf. Cert.
85		680.8220	FLASHING BEACON SIGN ASSEMBLY	N/A	N/A		N/A		N/A	Manufacturer Cert
86	11	680.981248	FIBER OPTIC TERMINATION PANEL - 12 FIBER	N/A	N/A		N/A		N/A	Manufacturer Cert
87	08	683.960501	FIBER OPTIC DROP CABLE FUSION SPLICE	N/A	N/A		N/A		N/A	Manufacturer Cert
88	08	683.960502	FIBER OPTIC CONNECTORIZATION	N/A	N/A		N/A		N/A	Manufacturer Cert
89	08	683.960503	FIBER OPTIC SPLICE CLOSURE	N/A	N/A		N/A		N/A	Manufacturer Cert
90	08	651.010100	FIBER OPTIC DETECTABLE INNERDUCT, 50 MM 2-CELL	N/A	N/A		N/A		N/A	Manufacturer Cert
91	08	670.402302	FURNISH AND INSTALL ELECTRICAL EQUIPMENT IN EXISTING LIGHTING SERVICE CABINET	N/A	N/A		N/A		N/A	Manufacturer Cert
92	08	680.5195XX	FIBER OPTIC PULL BOX (48IN X 36IN X 48IN)	N/A	N/A		N/A		N/A	Manufacturer Cert
93	08	680.960584	FURNISH & INSTALL 4 PORT ETHERNET DROP & REPEAT FIBER MODEMS WITH SC CONNECT	N/A	N/A		N/A		N/A	Manufacturer Cert
94	08	680.978101	14 MM COAXIAL CABLE, TYPE FLEXIBLE	N/A	N/A		N/A		N/A	Manufacturer Cert
95	08	683.101000	PAN/TILT/ZOOM DOME CCTV CAMERA ASSEMBLY WITH IPADDRESSABLE CONTROL UNIT	N/A	N/A		N/A		N/A	Manufacturer Cert
96	08	683.922112	FIBER OPTIC CABLE - 12 FIBERS	N/A	N/A		N/A		N/A	Manufacturer Cert
97	08	645.79XX00	DRIVER FEEDBACK SIGN	N/A	N/A		N/A		N/A	Manufacturer Cert
98	08	670.1035XX	WOOD LIGHT POLE (IN GROUND) "G"	N/A	N/A		N/A		N/A	Manufacturer Cert
99	08	670.1035XX	WOOD LIGHT POLE (ON STRUCTURE) "S" OR "S8"	N/A	N/A		N/A		N/A	Manufacturer Cert
100	08	670.7501XX	GROUND WIRE NO. 8 AWG	N/A	N/A		N/A		N/A	Manufacturer Cert
101	08	670.7501XX	GROUND WIRE NO. 10 AWG	N/A	N/A		N/A		N/A	Manufacturer Cert
102										
103			SIGNING & STRIPING							

Westchester County, New York Department of Public Works REPLACEMENT OF BRONX RIVER PARKWAY BRIDGES (AT CRANE ROAD) OVER BRONX RIVER AND METRO-NORTH RAILROAD Town of Greenburgh & Village of Scarsdale, New York				REQUIRED TESTS					REMARKS	
LINE	REG	Item No.	Item Description	PLANT/ STOCKPILE INSPECTION	RESPONSIBLE PARTY	FIELD TESTING/ INSPECTION	RESPONSIBLE PARTY	LABORATORY TESTING OF SAMPLES		RESPONSIBLE PARTY
104		645.81	TYPE A SIGN POSTS	N/A	N/A	N/A	N/A	N/A	N/A	Manufacturer Cert or App'd Mat'l Details
105		645.830103	TYPE B SIGN POST, GALVANIZED, S3X5.7 SECTION, OMNI-DIRECTIONAL BREAKAWAY BASE	N/A	N/A	N/A	N/A	N/A	N/A	Manufacturer Cert
106		685.01	WHITE EPOXY REFLECTORIZED PAVEMENT STRIPES - 15 MILS	N/A	N/A	N/A	REI	N/A	N/A	Sec 727-03- DOT Approved List & Manufacturer
107		685.02	YELLOW EPOXY REFLECTORIZED PAVEMENT STRIPES-15 MILS	N/A	N/A	N/A	REI	N/A	N/A	Sec 727-03- DOT Approved List & Manufacturer
108		685.03	WHITE EPOXY REFLECTORIZED PAVEMENT LETTERS - 15 MILS	N/A	N/A	N/A	REI	N/A	N/A	Sec 727-03- DOT Approved List & Manufacturer
109		685.04	WHITE EPOXY REFLECTORIZED PAVEMENT SYMBOLS - 15 MILS	N/A	N/A	N/A	REI	N/A	N/A	Sec 727-03- DOT Approved List & Manufacturer
110		685.11	WHITE EPOXY REFLECTORIZED PAVEMENT STRIPES - 20 MILS	N/A	N/A	N/A	REI	N/A	N/A	Sec 727-03- DOT Approved List & Manufacturer
111	08	645.48X00	INTERPRETIVE GRAPHIC SIGNS & LOGO PANELS	N/A	N/A	N/A	REI		N/A	
112										
113			LANDSCAPING							
114		207.20	GEOTEXTILE BEDDING	N/A	N/A	N/A	N/A	N/A	N/A	NYSDOT Approved List
115		608.05	BRICK PAVED SIDEWALKS AND DRIVEWAYS (BITUMINOUS SETTING BED)	Brick Paver Plant	NYSDOT					1. Brick Pavers: Sec 704-08 (DOT Approved List & Mat'l Cert) 2. Setting Bed:702-02/03 & 703.01
116		610.0203	ESTABLISHING TURF	N/A	N/A	N/A	N/A	N/A	N/A	Product Labeling & Certificate of Compliance or Manufacturer Certs
117	06	610.020301	WETLAND SEEDING	N/A	N/A	N/A	N/A	N/A	N/A	Product Labeling & Certificate of Compliance or Manufacturer Certs
118		610.03	ESTABLISHING WILDFLOWERS	N/A	N/A	N/A	N/A	N/A	N/A	Product Labeling & Certificate of Compliance or Manufacturer Certs
119		611.010194	PLANTING MAJOR DECIDUOUS TREE SPECIES (SEE CONTRACT DOCUMENTS) 4" CALIPER B	Nursery Inspection	REI	N/A		N/A		Certification of Inspection of Plant Materials
120		611.010195	PLANTING MAJOR DECIDUOUS TREES SPECIES, 4" CALIPER, BALLED & BURLAPPED, NURSE	Nursery Inspection	REI	N/A		N/A		Certification of Inspection of Plant Materials
121		611.020113	PLANTING MINOR DECIDUOUS TREE SPECIES (SEE CONTRACT DOCUMENTS) OTHER SIZE (A	Nursery Inspection	REI	N/A		N/A		Certification of Inspection of Plant Materials
122		611.020114	PLANTING MINOR DECIDUOUS TREE SPECIES (SEE CONTRACT DOCUMENTS) OTHER SIZE (A	Nursery Inspection	REI	N/A		N/A		Certification of Inspection of Plant Materials
123		611.040133	PLANTING DECIDUOUS SHRUB SPECIES (SEE CONTRACT DOCUMENTS) 20" HEIGHT/SPREAD	Nursery Inspection	REI	N/A		N/A		Certification of Inspection of Plant Materials
124		611.040143	PLANTING DECIDUOUS SHRUB SPECIES (SEE CONTRACT DOCUMENTS) 2' HEIGHT/SPREAD C	Nursery Inspection	REI	N/A		N/A		Certification of Inspection of Plant Materials
125		611.040152	PLANTING DECIDUOUS SHRUB SPECIES (SEE CONTRACT DOCUMENTS) 3' HEIGHT/SPREAD B	Nursery Inspection	REI	N/A		N/A		Certification of Inspection of Plant Materials
126		611.040162	PLANTING DECIDUOUS SHRUB SPECIES (SEE CONTRACT DOCUMENTS) 4' HEIGHT/SPREAD B	Nursery Inspection	REI	N/A		N/A		Certification of Inspection of Plant Materials
127		611.040172	PLANTING DECIDUOUS SHRUB SPECIES (SEE CONTRACT DOCUMENTS) 5' HEIGHT/SPREAD B	Nursery Inspection	REI	N/A		N/A		Certification of Inspection of Plant Materials
128		611.070112	SPECIAL PLANT MATERIALS SPECIES, AS SPECIFIED, BARE ROOT	Nursery Inspection	REI	N/A		N/A		Certification of Inspection of Plant Materials
129	11	613.010100	TOPSOIL, URBAN PLANTING MIX	Stockpile Sampling	NYSDOT	Contract Stockpile	REI	1. Gradation, Organic Content, pH	REI	
130		620.02	STONE FILLING (FINE)	Stockpile Sampling	NYSDOT	Contract Stockpile	REI	Soundness Test & Gradation	REI	
131		620.04	STONE FILLING (MEDIUM)	Stockpile Sampling	NYSDOT	Contract Stockpile	REI	Soundness Test & Gradation	REI	
132		620.05	STONE FILLING (HEAVY)	Stockpile Sampling	NYSDOT	Contract Stockpile	REI	Soundness Test & Gradation	REI	
133		620.08	BEDDING MATERIAL	Stockpile Sampling	NYSDOT	Contract Stockpile	REI	Soundness Test & Gradation	REI	
134										
135			STRUCTURAL							
136		203.21	SELECT STRUCTURAL FILL (MUSHROOM + MNR BRIDGE)	Stockpile Sampling	NYSDOT	Density (Nuclear or Volumetric or Sand Cone)	REI	1. Standard Proctor Max. Density, Gradation, Soundness and pH	REI	
137		207.26	PREFABRICATED COMPOSITE STRUCTURAL DRAIN (MUSHROOM+ MNR BRIDGE)	N/A	N/A	N/A	N/A	N/A	N/A	NYSDOT Approved List & Material Cert.
138	17	551.046001	HOLES IN EARTH FOR SOLDIER PILE & LAGGING WALL - 1	N/A	N/A	Visual	REI	N/A	N/A	
139	17	551.046101	ROCK SOCKETS FOR SOLDIER PILES AND LAGGING WALL	N/A	N/A	Visual	REI	N/A	N/A	
140	17	551.046201	INSTALL SOLDIER PILE - 1	1. Fabricator (Structural Steel) 2. Concrete Plant (Backfill)	NYSDOT	Air and Slump	REI	Concrete Cylinders	REI	Grout Backfill also
141	17	551.046301	INSTALL LAGGING FOR SOLDIER PILE WALLS - 1	Steel	NYSDOT	Visual	REI			
142	17	551.502200	STATIC PILE LOAD TEST	N/A		Pile Testing	REI			
143	08	551.9930XX	MICROPILES (DESIGN PROVIDED)	1. Grout/Concrete Plant 2. Rebar Plant	Contractor DOT	1. Baroid Mud Balance/S.G. Test 2. Grout Pressure Test 3. Grout Cube Samples	REI	Grout Strength Testing (on cubes)		Contractor supply Baroid Mud Balance Contractor supply pressure guage Set of 3 cubes per every 10 micropiles
144		553.010001	COFFERDAM (TYPE 1)	Plant	NYSDOT	Visual	REI			
145		553.010002	COFFERDAM (TYPE 1)	Plant	NYSDOT	Visual	REI			
146		553.010003	COFFERDAM (TYPE 1)	Plant	NYSDOT	Visual	REI			
147		553.010004	COFFERDAM (TYPE 1)	Plant	NYSDOT	Visual	REI			
148		553.010005	COFFERDAM (TYPE 1)	Plant	NYSDOT	Visual	REI			
149		553.010006	COFFERDAM (TYPE 1)	Plant	NYSDOT	Visual	REI			
150		553.010007	COFFERDAM (TYPE 1)	Plant	NYSDOT	Visual	REI			
151	01	555.02	CONCRETE FOR STRUCTURES CLASS MP (MASS PLACEMENT)	Concrete Plant	NYSDOT	Air & Slump	REI	Concrete Cylinders	REI	
152		555.08	FOOTING CONCRETE CLASS HP	Concrete Plant	NYSDOT	Air & Slump	REI	Concrete Cylinders	REI	
153		555.09	CONCRETE FOR STRUCTURES, CLASS HP	Concrete Plant	NYSDOT	Air & Slump	REI	Concrete Cylinders	REI	
154		555.11	CONCRETE FOR STRUCTURES, CLASS DP (BRACKETS)	Concrete Plant	NYSDOT	Air & Slump	REI	Concrete Cylinders	REI	
155		556.0203	GALVANIZED BAR REINFORCEMENT FOR STRUCTURES	N/A	N/A	N/A	N/A	N/A	N/A	Sec. 709-11; DOT App'd List & Manuf. Cert.
156		556.03	STUD SHEAR CONNECTORS FOR BRIDGES	N/A	N/A	N/A	N/A	N/A	N/A	Sec. 709-05: Manufacturer Cert.
157		557.07	SUPERSTRUCTURE SLAB W/ SEPARATE WEARING SURFACE, BOTTOM FORMWORK REQUIR	Concrete Plant & Rebar Plant	NYSDOT	Air & Slump	REI	Concrete Cylinders	DOT	Sec. 709.XX -DOT App'd List & Manuf. Cert.

Westchester County, New York Department of Public Works REPLACEMENT OF BRONX RIVER PARKWAY BRIDGES (AT CRANE ROAD) OVER BRONX RIVER AND METRO-NORTH RAILROAD Town of Greenburgh & Village of Scarsdale, New York				REQUIRED TESTS					REMARKS	
				PLANT/ STOCKPILE INSPECTION	RESPONSIBLE PARTY	FIELD TESTING/ INSPECTION	RESPONSIBLE PARTY	LABORATORY TESTING OF SAMPLES		RESPONSIBLE PARTY
LINE	REG	Item No.	Item Description							
158		557.09	SUPERSTRUCTURE SLAB W/ SEPARATE WEARING SURFACE, BOTTOM FORMWORK NOT RE	Concrete Plant & Rebar Plant	NYSDOT	Air & Slump	REI	Concrete Cylinders	DOT	Sec. 709.XX -DOT App'd List & Manuf. Cert.
159		557.22	STRUCTURAL APPROACH SLAB WITH SEPARATE WEARING SURFACE	Concrete Plant & Rebar Plant	NYSDOT	Air & Slump	REI	Concrete Cylinders	DOT	Sec. 709.XX -DOT App'd List & Manuf. Cert.
160		557.30	SIDEWALKS & SAFETY WALKS	Concrete Plant & Rebar Plant	NYSDOT	Air & Slump	REI	Concrete Cylinders	DOT	Sec. 709.XX -DOT App'd List & Manuf. Cert.
161	08	560.10XX00	REMOVE AND REINSTALL EXISTING STONE MASONRY	N/A	N/A	N/A	N/A	N/A	N/A	Samples of Stone Masonry submitted to Regional Director (RD) for approval
162	08	560.10XX00	FURNISH AND INSTALL STONE MASONRY	N/A	N/A	N/A	N/A	N/A	N/A	Samples of Stone Masonry submitted to Regional Director (RD) for approval
163		563.02	PRESTRESSED CONCRETE BOX BEAM UNITS	Shop Inspection	NYSDOT					PCCM: Report of Acceptance/Shipping of Structural Concrete and Acceptance Stamp
164		564.0501	STRUCTURAL STEEL (TYPE 1) OCTOGONAL COLUMN INSERTS	Shop Inspection	NYSDOT	Sampling Bolts,Nuts &Washers / Bolt Tension-Torque Wrench	REI	1. Tensile Test (Bolt) 2. Rotation Caacity (Bolt) 3. Chemical Analysis (Bolt, Nut, Washer)	DOT	Sec 715-15: Manuf. Certified Test Reports
165		564.0502	STRUCTURAL STEEL (TYPE 2) BRACKETS	Shop Inspection	NYSDOT	Sampling Bolts,Nuts &Washers / Bolt Tension-Torque Wrench	Contractor	1. Tensile Test (Bolt) 2. Rotation Caacity (Bolt) 3. Chemical Analysis (Bolt, Nut, Washer)	DOT	Sec 715-15: Manuf. Certified Test Reports
166		564.0503	STRUCTURAL STEEL (TYPE 3) EDGE BEAMS	Shop Inspection	NYSDOT	Sampling Bolts,Nuts &Washers / Bolt Tension-Torque Wrench		1. Tensile Test (Bolt) 2. Rotation Caacity (Bolt) 3. Chemical Analysis (Bolt, Nut, Washer)	DOT	Sec 715-15: Manuf. Certified Test Reports
167		564.0504	STRUCTURAL STEEL (TYPE 4) FOOTINGS	Shop Inspection	NYSDOT	Sampling Bolts,Nuts &Washers / Bolt Tension-Torque Wrench		1. Tensile Test (Bolt) 2. Rotation Caacity (Bolt) 3. Chemical Analysis (Bolt, Nut, Washer)	DOT	Sec 715-15: Manuf. Certified Test Reports
168		565.1821	TYPE E.P. BEARING	N/A	NYSDOT	N/A	N/A	N/A	N/A	Sec 716-10: NYSDOT Appr. List & Manuf. Cert
169		565.1923	TYPE E.L. BEARING	Shop Inspection	NYSDOT	N/A		1. Compression Deflection 2. Adhesion	DOT	Sec 716-11: Shipment Authorizations (BR 195) , Inspection Agency Stamp & Manuf. On DOT Appr. List
170		567.60	ARMORLESS BRIDGE JOINT SYSTEM			Water Tight Integrity Test	Contractor			NYSDOT Appr'd List & Mat'l Detail Sheet (MDS)
171		568.54	STEEL BRIDGE RAILING (THREE RAIL)	Shop Fabricator	NYSDOT					Shipment Report (B&GC4 Form) & Insp. Agency Stamp on members
172		569.05	SINGLE-SLOPE (FULL SECTION) CONCRETE BRIDGE BARRIER	Precast-Fabricator CIP - Concrete Plant	NYSDOT	Air & Slump	REI	Concrete Cylinders	REI	NYSDOT Approved List & Material Cert.
173		571.010001	TREATMENT AND DISPOSAL OF PAINT REMOVAL WASTE					Waste Testing	REI	for Disposal Facility/Transporter Req'mts
174	08	586.10XX01	TEMPORARY SUPPORT OF BRIDGE SUPERSTRUCTURE	Concrete Plant and Steel Plant	NYSDOT	Air and Slump	REI	Concrete Cylinders	REI	
175	08	586.10XX02	TEMPORARY SUPPORT OF BRIDGE SUPERSTRUCTURE	Concrete Plant and Steel Plant	NYSDOT	Air and Slump	REI	Concrete Cylinders	REI	
176	08	586.10XX03	TEMPORARY SUPPORT OF BRIDGE SUPERSTRUCTURE	Concrete Plant and Steel Plant	NYSDOT	Air and Slump	REI	Concrete Cylinders	REI	
177	08	586.10XX04	TEMPORARY SUPPORT OF BRIDGE SUPERSTRUCTURE	Concrete Plant and Steel Plant	NYSDOT	Air and Slump	REI	Concrete Cylinders	REI	
178	08	586.10XX05	TEMPORARY SUPPORT OF BRIDGE SUPERSTRUCTURE	Concrete Plant and Steel Plant	NYSDOT	Air and Slump	REI	Concrete Cylinders	REI	
179	08	586.10XX06	TEMPORARY SUPPORT OF BRIDGE SUPERSTRUCTURE	Concrete Plant and Steel Plant	NYSDOT	Air and Slump	REI	Concrete Cylinders	REI	
180		603.061614	CORRUGATED STEEL PIPE, PAVED INVERT - (2-2/3"X1/2") CORRUGATIONS) 30 INCH DIAMETE	N/A	N/A	N/A	N/A	N/A	N/A	NYSDOT Approved List
181		607.0511	VINYL COATED STEEL CHAIN-LINK FENCE ON PLASTIC COATED FRAME (SNOW FENCE)	N/A	N/A	N/A	N/A	N/A	N/A	Material Certs
182	08	607.7008XX	STEEL PICKET FENCE	N/A	N/A	N/A	N/A	N/A	N/A	Sec 710-10 -Materials Cert.
183		609.0302	GRANITE BRIDGE CURB (TYPE F1)	N/A	N/A	N/A	N/A	N/A	N/A	Granite-714-01 & Anchors -709-07(DOT Approved List)
184										
185			MISCELLANEOUS ITEMS							
186		625.06	PERMANENT SURVEY MARKERS	Concrete Plant (CIP)	NYSDOT					Class A Concrete
187										

Definitions

NYSDOT - New York State Department of Transportation
REI - Consulting Firm Performing Resident Engineering and Inspection on the Project